

Kinnegrip.

SAFETY ON THE ROAD



T50 Dropside lock

For light vehicles

COMPANY

Kinnegrip

Kinnegrip is a Swedish company that develops, markets, manufactures and supplies locking systems to transport vehicles with a long tradition and experience in the industry going back to 1966.

Our headquarter and manufacturing facility are located in LIDKÖPING, Sweden. We are well established in Europe and Asia through our network of distributors and we export over 95%.

With Kinnegrip as your supplier, you know that your business is in safe hands. You get secure deliveries and sustainable solutions. Our technical expertise enables us to provide tailor-made products. Our main strength is that all our production takes place in-house, from raw material to the finished product.

Kinnegrip manufactures products with the utmost care with regard to product quality and environmental impact. We use the most efficient production methods to ensure that our customers receive products of the highest quality and performance. Kinnegrip is ISO certified to ISO 9001:2015 and 14001:2015.

Our solutions

Kinnegrip offers a variety of vehicle locking solutions within 3 product families in steel, aluminium and galvanized material for light and heavy vehicles:



K pillars

Dropside locks for heavy vehicles.



T50

Dropside locks for light vehicles.



C10 pillars

Pillars for Curtainsider.





CONTENTS

Company	2
T50 Dropside lock	4
T50 Functionality	6
Design – Safety	7
Product data dropside lock	8
Accessories dropside lock	9
Product data Side	10
Accessories Side	11
Overveiw Dropside lock	12
Overveiw Side	13
Material	15
Contact	16

Kinnegrip's products contribute to the safe transportation of goods on our roads.

KINNEGRIP

T50 dropside lock

T50 is a modern system for flatbed constructions consisting of dropside locks. The system is used as a standard solution on many established vehicles and is tested to EN12642.

T50 is a smart and flexible locking system for light vehicles. To cater for vehicle-specific applications, T50 is available at different drop side heights from 300 mm. T50 is made from aluminium and component parts are made from stainless steel and fibreglass reinforced polyamide.

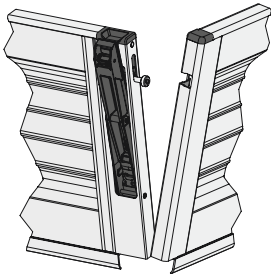
This gives a low weight and good corrosion resistance. The dropside lock is mounted directly on the dropsides, creating an open and easily accessible load area with a focus on good functionality, a high level of personal safety and easy operation.

- Low weight and good corrosion resistance
- Lock and lock profile built into the dropsides
- Safety catch prevents unintentional opening
- Locking mechanism designed to minimize protruding parts in the open position
- The dropside lock is mounted directly on the dropsides, creating an open and easily accessible load area
- Flexible pillar for light vehicles
- Easy handling
- Customized handles with logotype
(for large volumes)

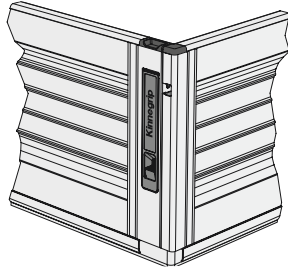
A close-up photograph of a silver metal handle. The handle has a black grip area in the center, which is embossed with the word 'Kinnegrip' in a bold, sans-serif font. To the left of the grip area, there is a small, cylindrical metal knob. The background is a blurred, light blue color.

Kinnegrip

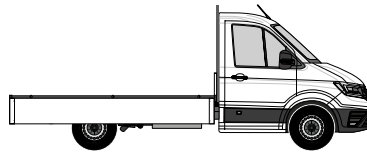
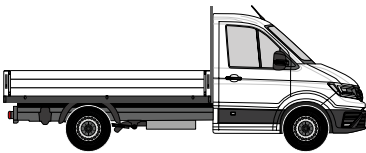
Functionality



Lock and lock profile open

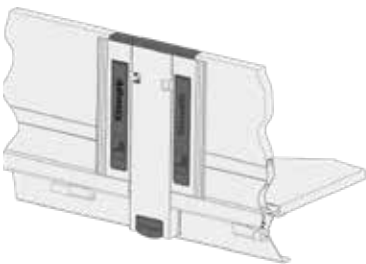


Lock and lock profile closed



Open load area – lock & lock profile

The dropside lock is mounted directly on the drop-sides, creating a complete open load area when the drop-sides are folded down.



Side pillar and lock closed



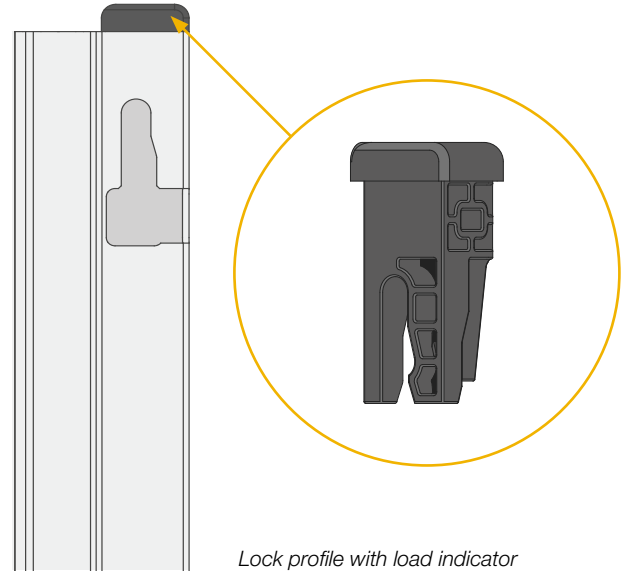
Open load area - centre pillar

The side pillar is assembled in combination with 2 pcs T50 locks. The locks are mounted on the drop-sides and can be folded. The side pillar can be removed which creates an open loading area. It can also function as a separator to create different loading areas as well as support for a canopy.

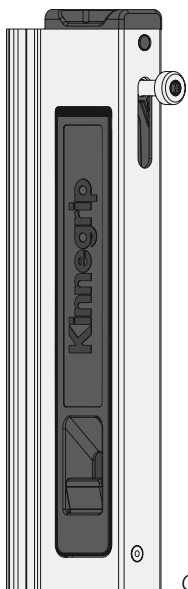
Design – Safety

Load indicator

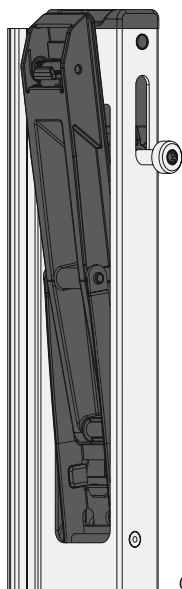
The lock profile is fitted with a load indicator that prevents unintentional or risky operation. The safety catch in the lock handle and the load indicator prevent the handle being opened when there is pressure on the inside of the dropside panel.



Lock profile with load indicator



Closed lock



Open lock

Intelligent locking mechanism

Locking mechanism is designed to minimize protruding parts in both the open and closed position.

The handle is fitted with a safety catch that prevents unintentional opening.

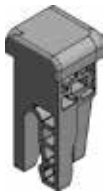
Product data

PART NO.	DESCRIPTION	LENGTH	WEIGHT
730005-KG	T50 Lock 300 Right Aluminium	300 mm	0,60 kg
730006	T50 Lock profile 300 Right Aluminium	300 mm	0,30 kg
730055-KG	T50 Lock 300 Left Aluminium	300 mm	0,60 kg
730056	T50 Lock profile 300 Left Aluminium	300 mm	0,30 kg
740005-KG	T50 Lock 400 Right Aluminium	400 mm	0,70 kg
740006	T50 Lock profile 400 Right Aluminium	400 mm	0,30 kg
740055-KG	T50 Lock 400 Left Aluminium	400 mm	0,70 kg
740056	T50 Lock profile 400 Left Aluminium	400 mm	0,30 kg
750005-KG	T50 Lock 500 Right Aluminium	500 mm	0,80 kg
750006	T50 Lock profile 500 Right Aluminium	500 mm	0,40 kg
750055-KG	T50 Lock 500 Left Aluminium	500 mm	0,80 kg
750056	T50 Lock profile 500 Left Aluminium	500 mm	0,40 kg

Customized on request

Accessories

PART NO.	DESCRIPTION
097505	T50 Load indicator Right, integrated in profile
097506	T50 Load indicator Left, integrated in profile
097507	T50 Top cover Right
097508	T50 Top cover Left
097528	T50 Load indicator right no cover
097529	T50 Load indicator left no cover



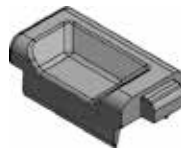
097505



097506



097507



097508



097528



097529

Product data

PART NO.	DESCRIPTION		
730022	Side pillar T50 300 Aluminium	390 mm	1,26 kg
740022	Side pillar T50 400 Aluminium	490 mm	1,49 kg
750022	Side pillar T50 500 Aluminium	590 mm	1,70 kg

Customized on request

Accessories

PART NO.	DESCRIPTION
017650-02	T50 SIDE Support, short screw
017660-02	T50 SIDE Support, long screw
097653	T50 SIDE Topp cover
097658	T50 SIDE Load indicator right
097659	T50 SIDE Load indicator left



017650-02



017660-02



097653

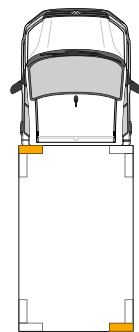
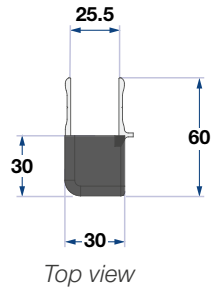
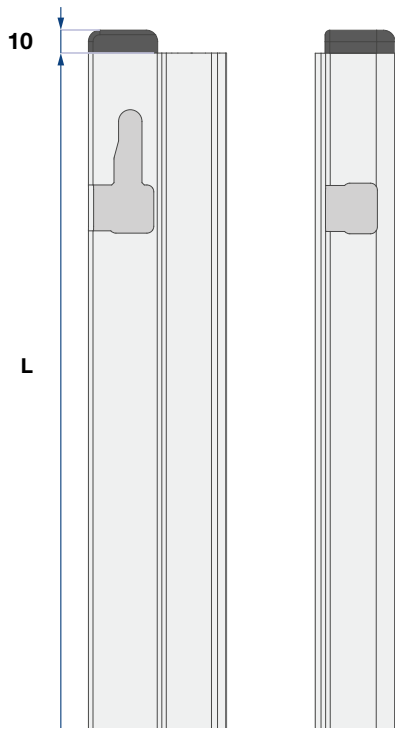


097658



097659

Lock profile left



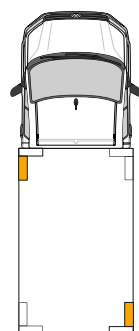
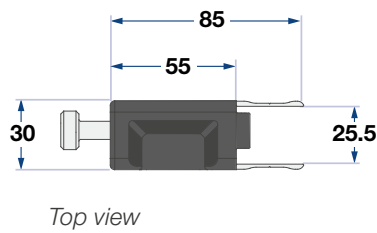
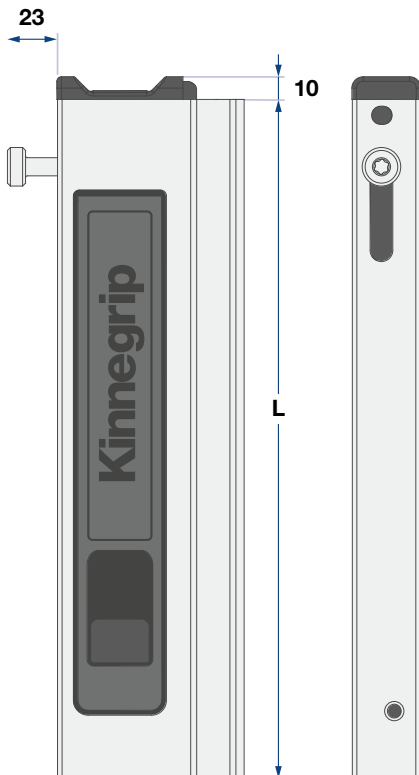
PART NO.

730056

740056

750056

Lock left



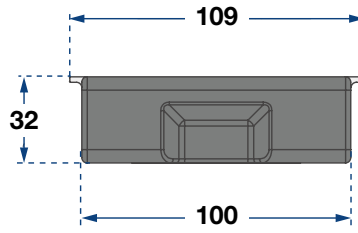
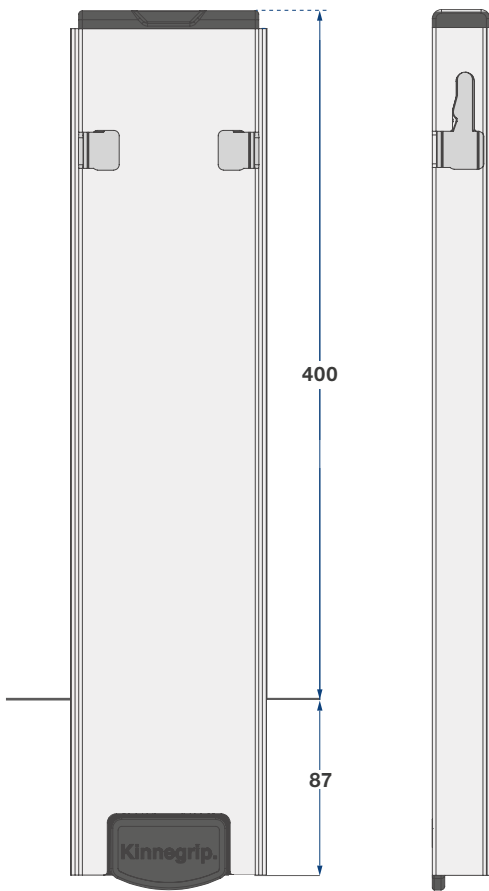
PART NO.

730055-KG

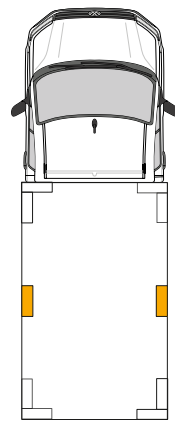
740055-KG

750055-KG

Side pillar



Top view



Position on vehicle

PART NO.

730022

740022

750022



Material

<p>Product family T50 Dropside lock</p>	<p>Strength/Certificate Certified to EN 12642.</p>
<p>Applications Locking system for dropside locks with dropside heights from 300 mm. For light vehicles.</p>	<p>Quality Kinnegrip is certified to ISO 9001:2015 ISO 140001:2015 Quality assurance to IATF and ISO</p>
<p>Material The dropside lock is made from aluminium and component parts are made from stainless steel and fibreglass reinforced polyamide.</p>	<p>Maintenance We recommend soap products with a pH of 6-8 to be used (do not use products containing chlorine). After cleaning, rinse surfaces with water. The mechanism and moving parts should be lubricated regularly.</p>
<p>Surface treatment The material is anodized to achieve optimal corrosion protection.</p>	<p>Environmental impact & recycling Kinnegrip AB is environmentally certified to ISO 14001. This means that we have control of our routines, conduct active environmental work and constantly strive to minimize our impact on the environment. Kinnegrip's products are manufactured from steel and aluminium, which means that they can be recycled completely. Of course, we choose materials based on IMDS*, a system that allows us to comply with international standards, laws and regulations.</p>
<p><small>* IMDS (International Material Data System) is the automotive industry's material data system and has become a global standard used by nearly all global OEM manufacturers. IMDS collects all materials used for automotive production, maintenance, analysis and archiving. Using IMDS enables the producer to fulfil the obligations imposed on vehicle manufacturers, and thus on their suppliers, according to national and international standards, laws and regulations.</small></p>	

Kinnegrip AB, Sweden

Box 2164 SE-531 02 Lidköping

Visiting address:

Lindhagsgatan 6-8, SE-531 40 Lidköping

Telephone: +46 510 890 00

Email: info@kinnegrip.se

www.kinnegrip.se



AUSTRIA

AMARI AUSTRIA GMBH
www.amari.at

BELGIUM

ALMET
www.almet-benelux.eu

CZECH REPUBLIC

ALU-SV S.R.O.
www.alu-sv.cz

DENMARK

A/S BEVOLA
www.bevola.com

ESTONIA

TMT. MALINEN BALTIC OÜ
www.tmt.fi/cms/en/tmt-baltic-ou

FINLAND

MOTORAL OY
www.motoral.fi

TMT MALINEN OY

www.tmt.fi

FRANCE

POMMIER S.A.S
www.pommier.eu

GERMANY

HOFMEISTER & MEINCKE GMBH
www.hofmei.de

SUER NUTZFAHRZEUGE GMBH &
CO KG

www.suer.de

GEBR. TITGEMEYER GMBH & CO KG

www.titgemeyer.de

HUNGARY

ITAL ACCESSORI ROMANO ZANETTI
www.ital-accessori.sk

ITALY

EFFE CAR
www.effecarsnc.it

PADOVANI RICAMBI S.r.l.

www.padovaniricambi.it

PORFIRI SNC

www.porfiri.eu

SIRA S.r.l

www.sirasrl.it/

LATVIA

TMT. MALINEN BALTIC OÜ
www.tmt.fi/cms/en/tmt-baltic-ou

LITHUANIA

TMT. MALINEN BALTIC OÜ
LEHMJA KÜLA
www.tmt.fi/cms/en/tmt-baltic-ou

NETHERLANDS

ALMET
www.almet-benelux.eu

NORWAY

MOREK A/S
www.morek.no

HYDAL TRANSPORTSYSTEMER A/S

www.hytrans.no

POLAND

POMMIER POLSKA SP Z O.O
www.pommier.pl

SUER POLSKA SP. Z O.O.

www.suer.pl

ROMANIA

TRANS-TECHNIK SPOL. S R.O.
www.trans-technik.ro

RUSSIA

TMT MALINEN OY
www.tmt.fi

SLOVAKIA

ALU-SV S.R.O.
www.alu-sv.cz

SLOVENIA

TRADING D.O.O.
www.trading.si

SOUTH KOREA

WILLING CO LTD. - KOMAT
kiyoungkim@komat.com

SPAIN

A.AUXILIAR CARROCERA
www.auxiliarcarrocera.com

POMMIER

www.pommier.es

SWEDEN

EUROPART
www.europart.se

SLÄPIS

www.slapis.se

SWITZERLAND

PWP SA
www.pwp-sa.ch

UNITED KINGDOM

POMMIER FURGOCAR UK LTD

Kinnegrip.

SAFETY ON THE ROAD